



# SCI-COM Software India Pvt. Ltd.

## Company Profile



# About Us



SCICOM Software Pvt. Ltd.

***Design and development of Machine Vision  
Systems, Factory Automation and Control  
Solutions and Software Testing and  
Validation Services***

SCICOM software provides product engineering, software solutions and products to following industries – *Automotive and Transportation, FMCG, Industrial goods, Pharmaceutical and Chemical, Arms and Defense, Food processing and Medical.*

SCI-COM offers **Engineering Software Services** in the field of digital image processing, numerical analysis and scientific computing.

We at SCI-COM apply right combination of professional experience, creativity and hard-work to deliver custom solutions at remarkable reliability and efficiency.



# Clients





# Key Competencies



## Machine Vision

- ✓ Presence/Absence – *Count no. of part, Inspect for shortage*
- ✓ Irregularity, Flaw & Damage – *Foreign Object Detection, Defect Detection (Shape, Size, Color, Texture, Pattern, etc.)*
- ✓ Dimension and Position Measurement – *Edge Measurement, Distance Measurement, Location and Orientation, Error Proofing*
- ✓ Data Reading – *Printed Text, Barcode, QR, Dot Peen, Alpha-Numeric Codes*

## Security and Surveillance

- ✓ City Surveillance – *Video Analytics, Access Control, Pedestrian Surveillance, License Plate Recognition*
- ✓ ATM Security System – *Face Detection, Remote Monitoring*
- ✓ Virtual Fence – *Intrusion Detection, Object Tracking*
- ✓ X-Ray Imaging – *Baggage Scanners*



# Key Competencies



## Industrial Automation and Control

- ✓ Automated Car Parking System – *Combo-Lift Parking, Tower Parking*
- ✓ Automotive Data Loggers – *Online Vehicle Tracking, Monitoring of Automobile data (Distance, Acceleration, Temperature, Vibrations, etc.)*
- ✓ Control Panel Design – *Electrical Design and Panel Development*
- ✓ Design/Development of SCADA systems

## Software Development and Testing

- ✓ Image Processing Algorithms
- ✓ Fragment Analysis Software and Data Analysis
- ✓ Tensor Flow Development
- ✓ Software Validation of Automated Systems





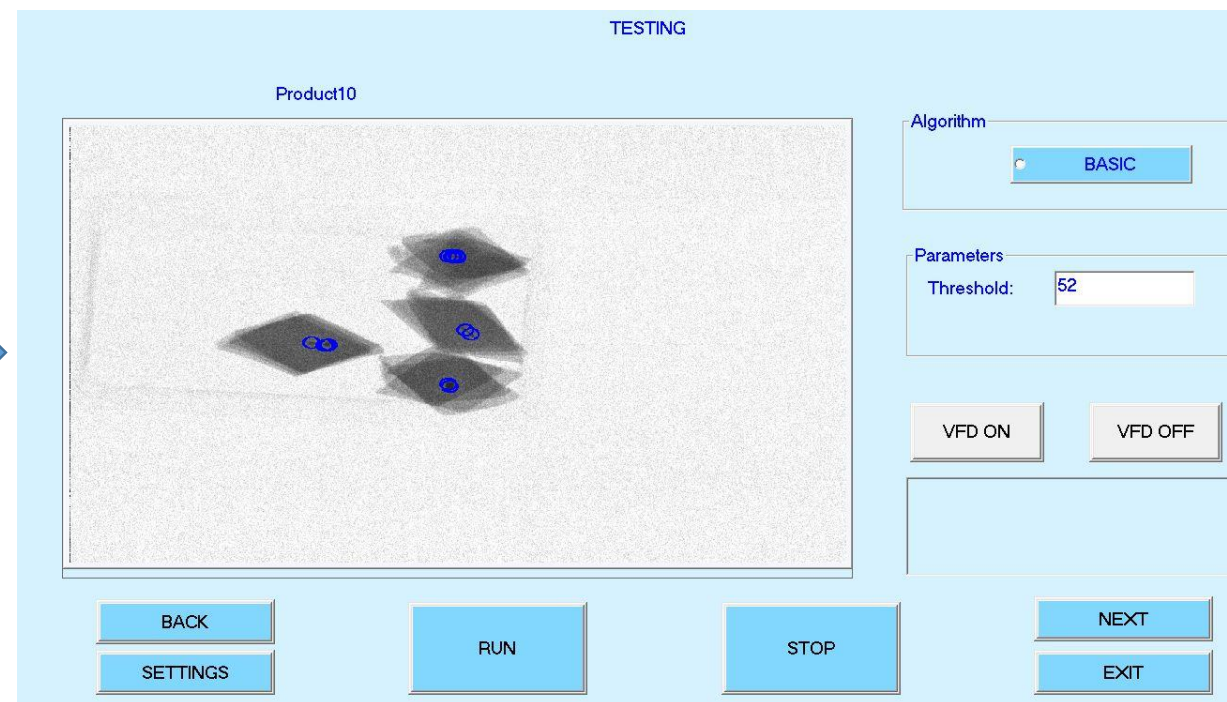
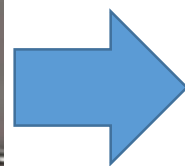
## Our Innovations



# Food Inspection



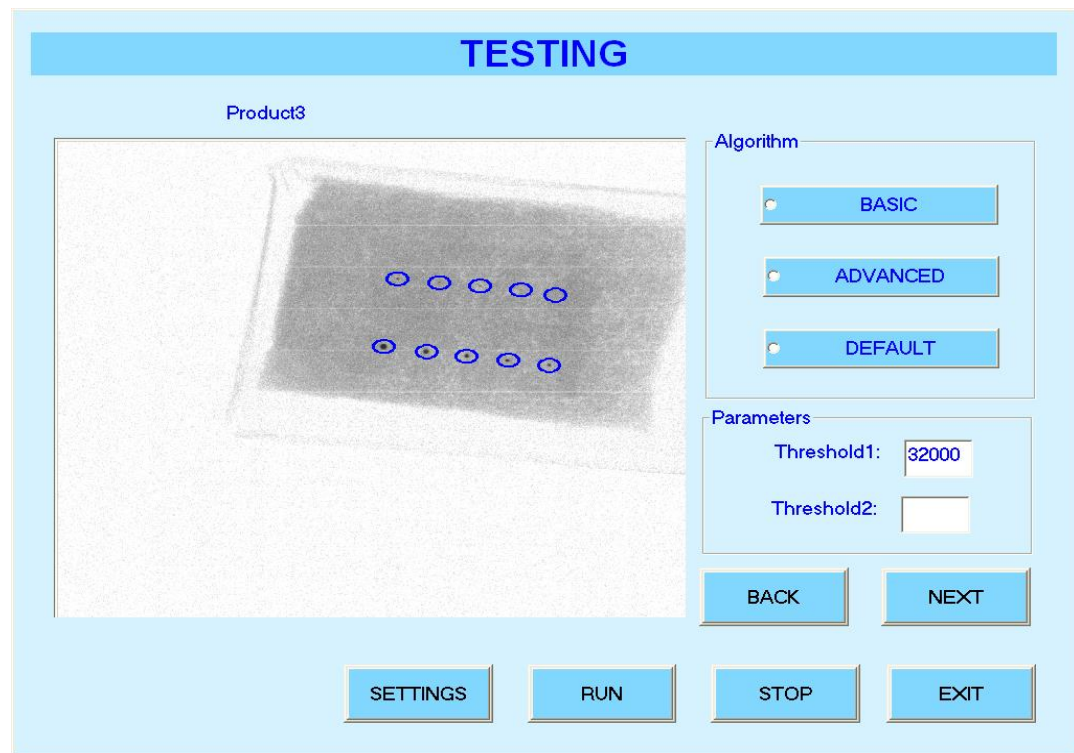
Passing food packets through X-Ray machine



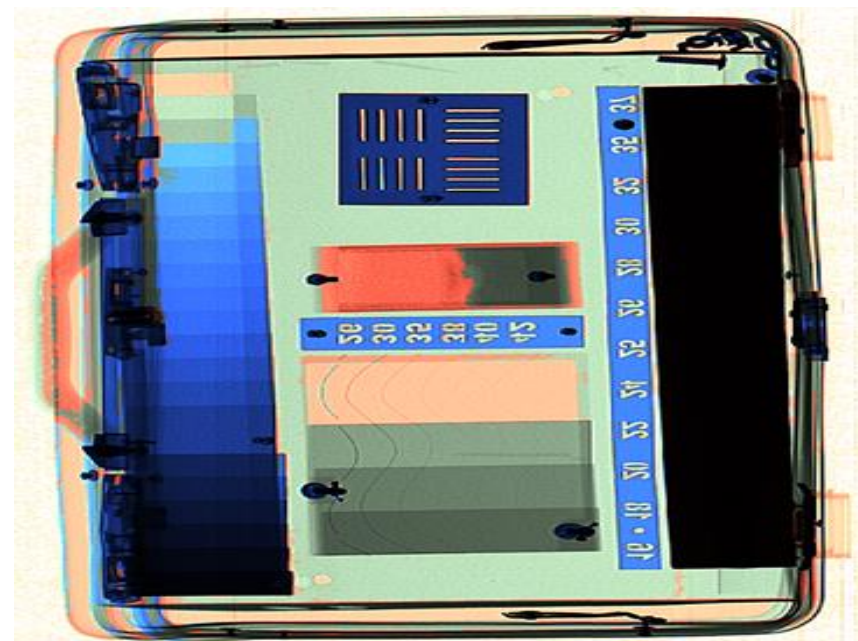
Defect detection up to size 0.8mm



# X-Ray Based Inspection



Detection of metal contaminations in packed food packets.



Determination of organic (Orange), inorganic (Green) and metals (Black) in a baggage.



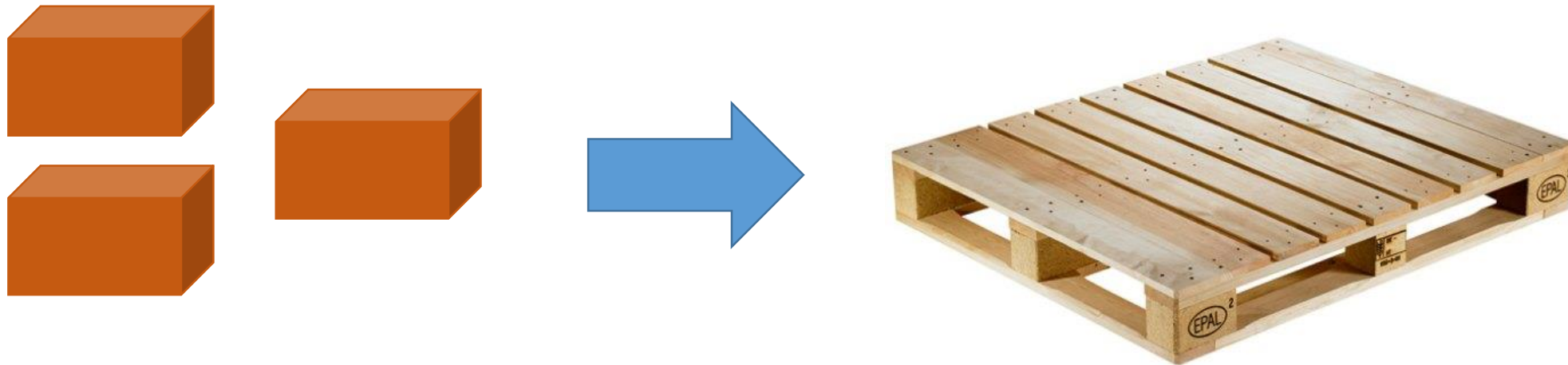


# Box Palletizing



Loading the boxes of different sizes on to a pallet or tray of fixed size

- Unused space should be small
- Optimized packing considering the constraints: height and weight of pallet



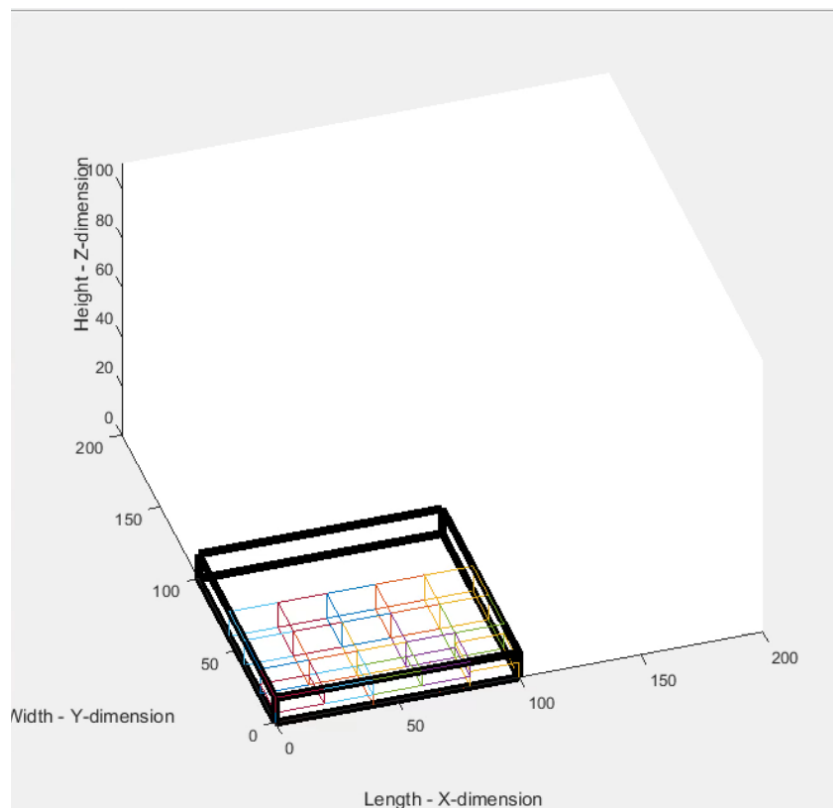
YouTube Link – <https://youtu.be/EJaeGgunEqY>



# Box Palletizing



## Output Display



\*\*\* REPORT \*\*\*

```

ELAPSED TIME                               : Almost 0 sec
TOTAL NUMBER OF ITERATIONS DONE             : 1
BEST SOLUTION FOUND AT ITERATION            : 1 OF VARIANT: 1
TOTAL NUMBER OF BOXES                      : 17
PACKED NUMBER OF BOXES                     : 17
TOTAL VOLUME OF ALL BOXES                   : 58400
PALLET VOLUME                              : 100000
BEST SOLUTION'S VOLUME UTILIZATION          : 58400 OUT OF 100000
PERCENTAGE OF PALLET VOLUME USED            : 58.400000 %
PERCENTAGE OF PACKED BOXES (VOLUME)        : 100.000000 %
WHILE PALLET ORIENTATION                   : X=100; Y=100; Z= 10
    
```

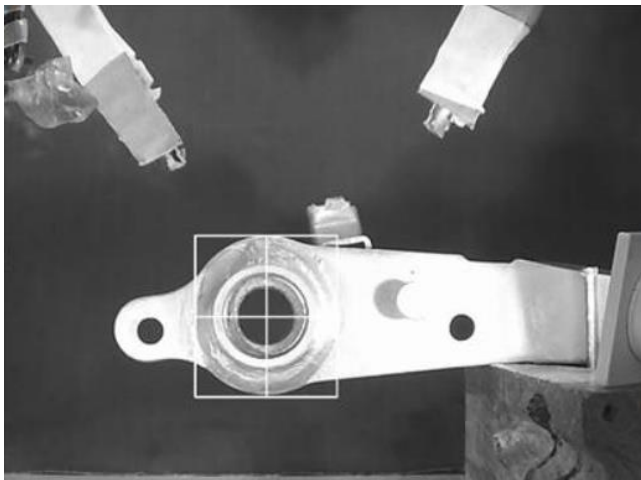
NO:	PACKSTA	DIMEN-1	DIMEN-2	DIMEN-3	COOR-X	COOR-Y	COOR-Z	PACKEDX	PACKEDY	PACKEDZ
1	1	40	20	4	0	0	0	40	20	4
2	1	40	20	4	40	0	0	40	20	4
3	1	20	20	6	80	0	0	20	20	6
4	1	20	20	6	60	0	4	20	20	6
5	1	20	20	6	40	0	4	20	20	6
6	1	20	20	6	20	0	4	20	20	6
7	1	20	20	6	0	0	4	20	20	6
8	1	20	20	10	0	20	0	20	20	10
9	1	20	20	10	20	20	0	20	20	10
10	1	20	20	10	40	20	0	20	20	10
11	1	20	20	10	60	20	0	20	20	10
12	1	20	20	10	80	20	0	20	20	10
13	1	20	20	10	0	40	0	20	20	10
14	1	20	20	10	20	40	0	20	20	10
15	1	20	20	10	40	40	0	20	20	10
16	1	20	20	10	60	40	0	20	20	10
17	1	20	20	10	80	40	0	20	20	10



# Model Inspection for Metal Parts



Dimension detection for  
quality inspection



Detecting orientation of the  
text for catalytic converter



Detecting presence of all  
child parts and the welding  
quality for brake pedal





# Glass Vial Inspection



To measure following parameters and defect following defect on-line for a glass Vial used in Pharmaceutical Applications.

## To Measure –

- Body Diameter
- Total Height
- Height from base to shoulder
- Lip Height
- Neck Height
- Internal Diameter of mouth
- Outer Diameter of mouth

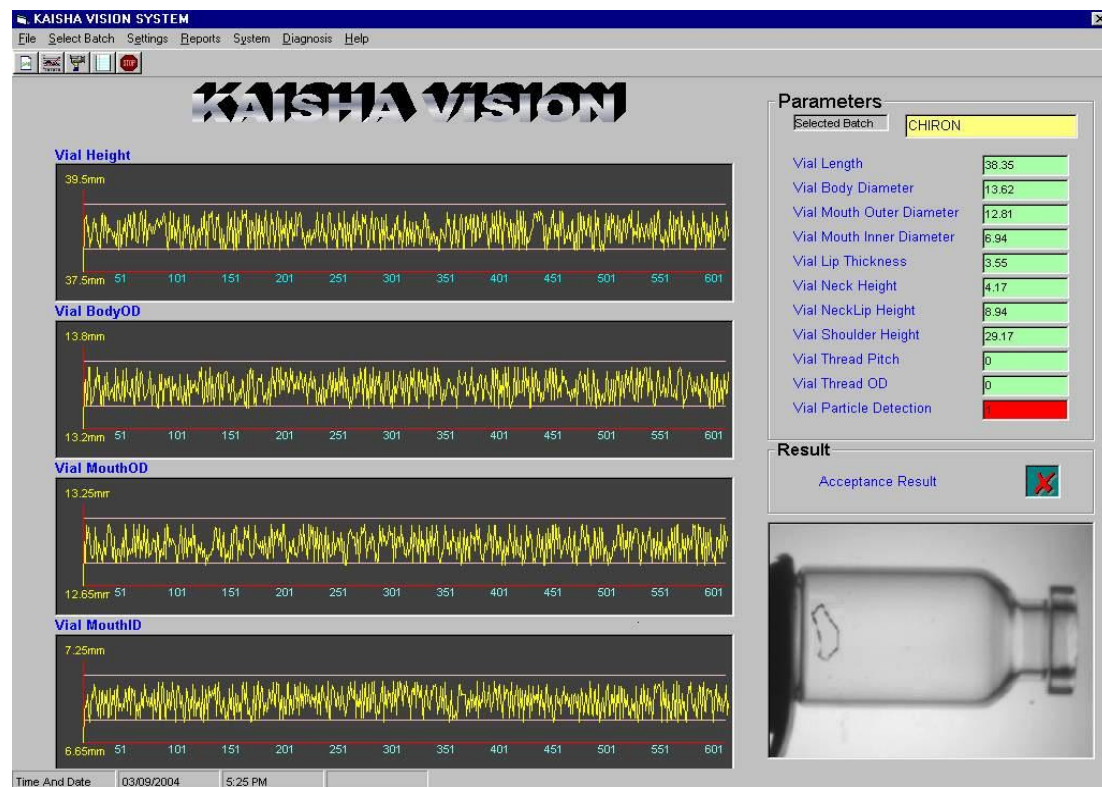
## Defect Detection –

- Lip plus Neck Height
- Outer Diameter of thread (for Screw Vials)
- Thread Pitch (for Screw Vials)
- Cosmetic defects (Chips etc.)
- Foreign bodies inside the vial





# Glass Vial Inspection



1 of 35+ 100% Total:1202 100% 1202 of 1299

### Vial Analysis Report

**KAISHA VISION**

BatchName: CHIRON BatchDateTime: 03/09/2004 12:00

	Height	BodyOD	MouthOD	MouthID	LipTh	NeckHt	ShoulderHt	NeckLip	ThreadPi	ThreadOD	PartL
	38.71	13.51	12.97	6.88	3.54	4.78	29.26	8.51	0.00	0.00	
	38.82	13.56	12.81	6.92	3.71	4.79	29.47	8.87	0.00	0.00	
	38.88	13.36	13.09	6.91	3.61	4.77	29.09	8.55	0.00	0.00	
	38.47	13.44	12.99	7.00	3.53	4.28	29.33	9.33	0.00	0.00	
	38.59	13.65	13.08	6.87	3.66	4.98	29.03	8.74	0.00	0.00	
	38.10	13.65	13.00	6.80	3.62	4.10	29.30	8.60	0.00	0.00	
	38.07	13.38	12.90	6.83	3.45	4.54	29.04	9.16	0.00	0.00	
	38.83	13.37	12.85	7.01	3.59	4.36	29.21	8.65	0.00	0.00	
	38.93	13.51	12.82	7.03	3.57	4.46	28.70	8.99	0.00	0.00	
	38.33	13.37	12.98	6.85	3.73	4.09	28.77	8.94	0.00	0.00	
	38.88	13.58	12.88	7.00	3.52	4.09	28.82	8.53	0.00	0.00	
	38.79	13.44	12.87	6.94	3.52	4.34	28.98	8.54	0.00	0.00	
	38.20	13.61	12.98	7.03	3.73	4.33	28.58	9.04	0.00	0.00	

1

Time And Date: 03/09/2004 9:07 PM

YouTube Link – <https://youtu.be/MralA9zI3Oo>



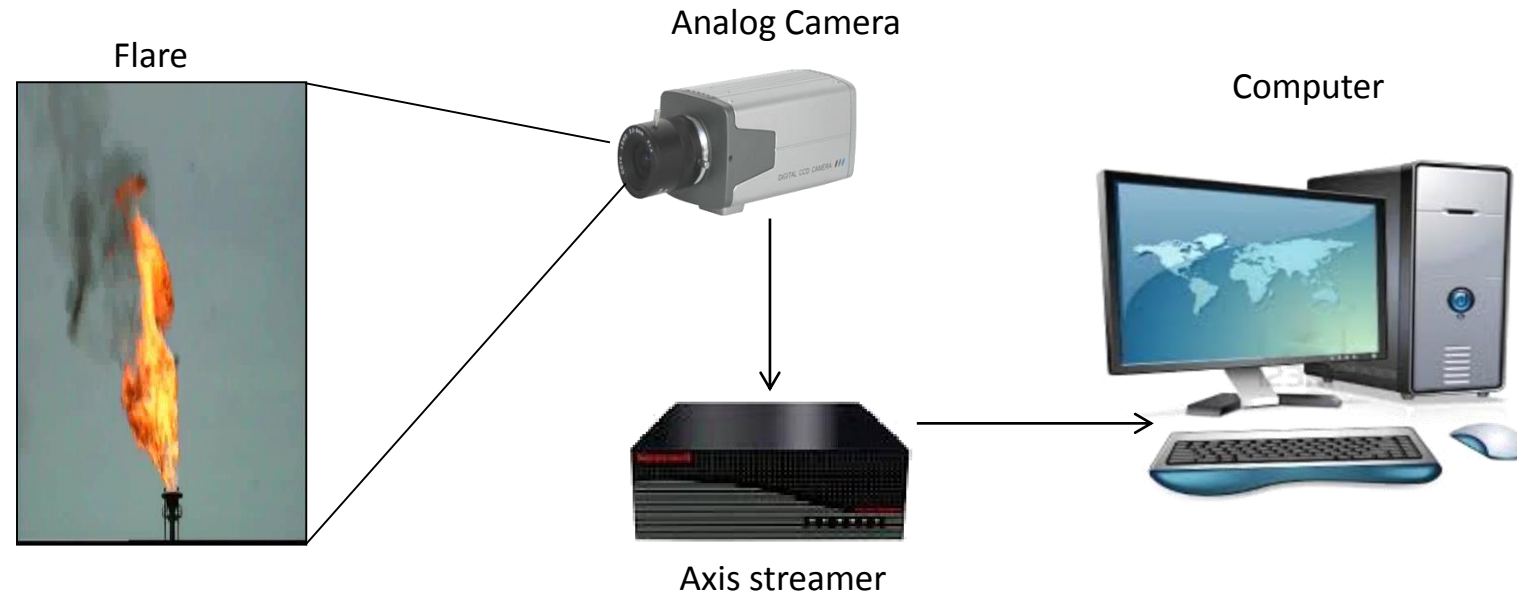
# Flare Monitoring Software



To develop a complete system for monitoring abnormal flares emitted from a refinery chimney.

## Features:

- User can set parameters for detection of abnormal flare.
- Remote monitoring of flare through software.
- Real-time alerts.
- Capability to monitor flare area and graphical display of flare area.
- Detailed log of events along with time-stamp and image storage.



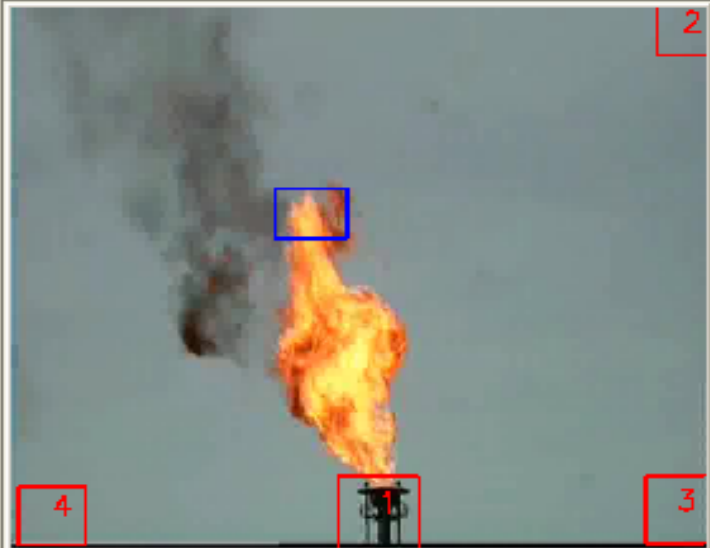


# Flare Monitoring Software



WT-COLORMET-3.0 : Settings

Streamer Out



The image shows a flare with four numbered red boxes: 1 at the base, 2 at the top of the smoke, 3 at the bottom right, and 4 at the bottom left.

OK Cancel

Connect Streamer Offline Browse

Flare Area

Smoke Level (%) 60

Black Smoke Duration(Sec) 2

Abnormal Flare Duration(Sec) 2

No Flare Duration(Sec) 10

Masking Regions

☐ Mask1 ☐ Mask2

☐ Mask3 ☒ Mask4



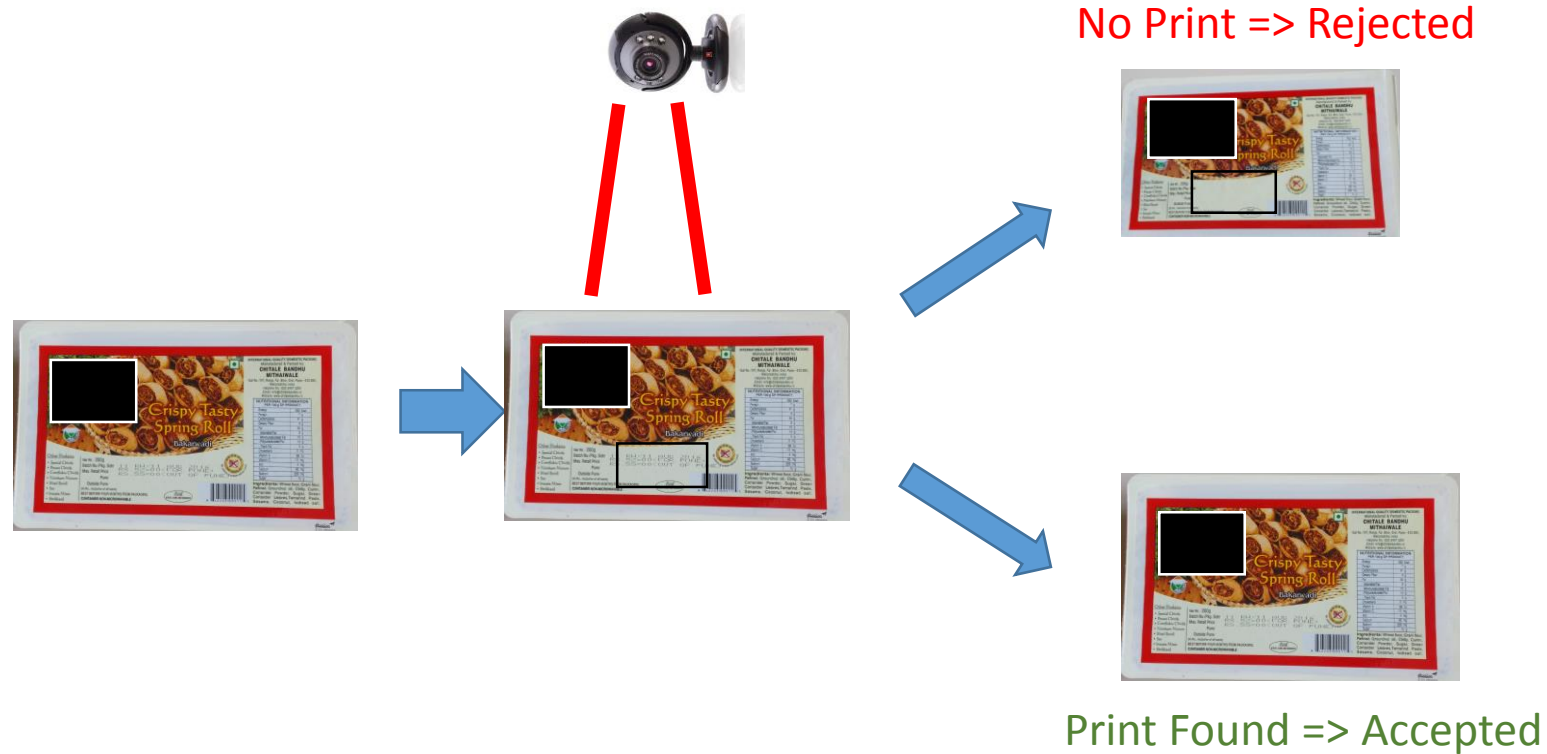
# Food Packet Inspection



To verify printed details (manufacturing date, price etc.) on a food packet.

Features:

- Online checking of print
- Place of print to be checked can be variable
- Affordable and easy-to-use software








# Food Packet Inspection




FPackInspect

Live Streaming



Detected



Accept 2

Reject 0

Sr.No.	Date	Status	Name
1	07-Oct-16	ACCEPT	1-ACCEPT.tif
2	07-Oct-16	ACCEPT	2-ACCEPT.tif

FPackInspect

Live Streaming



Detected



Accept 4

Reject 1

Sr.No.	Date	Status	Name
1	07-Oct-16	ACCEPT	1-ACCEPT.tif
2	07-Oct-16	ACCEPT	2-ACCEPT.tif
3	07-Oct-16	ACCEPT	3-ACCEPT.tif
4	07-Oct-16	ACCEPT	4-ACCEPT.tif
5	07-Oct-16	REJECT	1-REJECT.tif

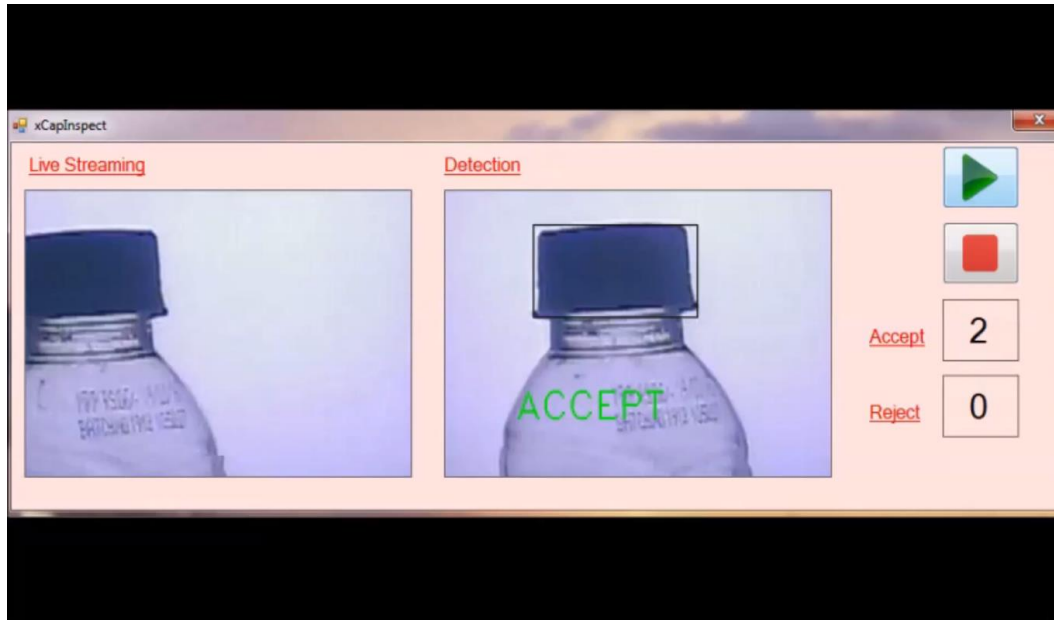
YouTube Link – <https://youtu.be/0Dk5KJ4A9pU>



# Bottle Cap Inspection



To verify the closure of bottle caps on line.



YouTube Link – <https://youtu.be/AEA4qIBQIkU>

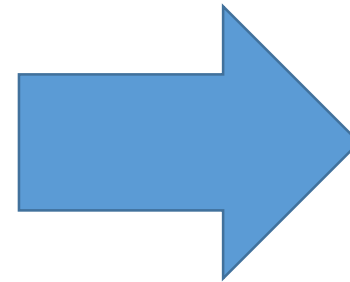


# Gino



A mobile application that counts the number of pipes loaded at any place

Image captured on camera



- Number of Pipes of Type 1 = 30
- Number of Pipes of Type 2 = 15





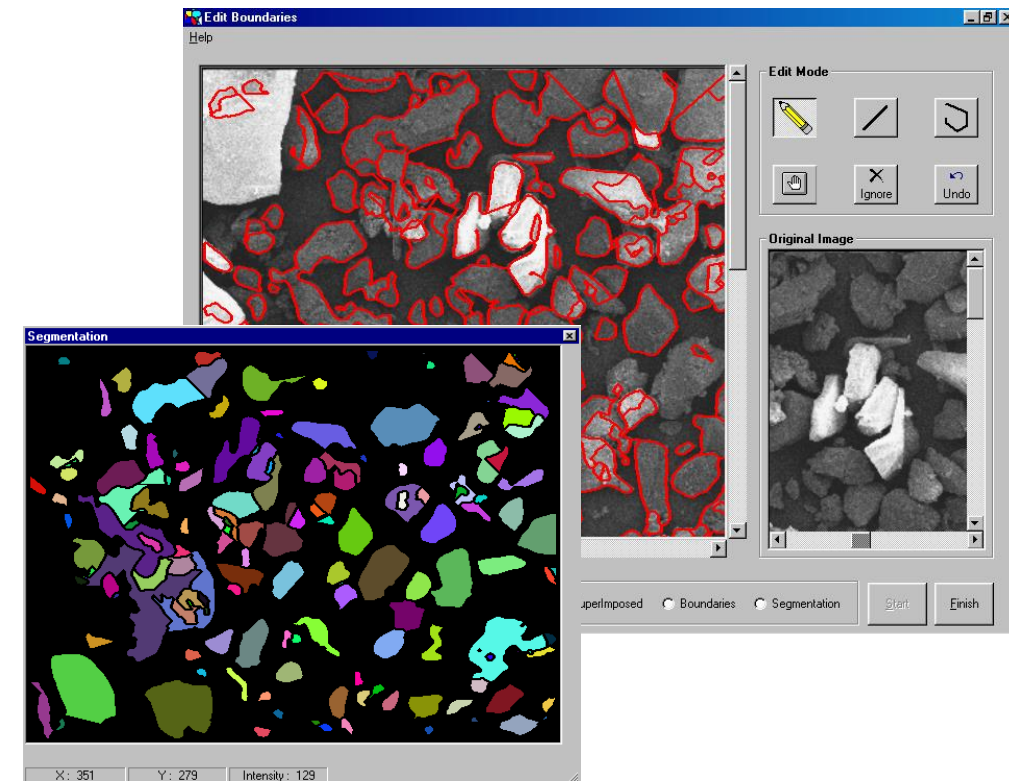
# Fragment Image



To perform a quick size/shape analysis of fragments created by blasting operation.

## Features:

- Analysis of the blast fragments – Image enhancement, Edge detection, Calibration and Geometric correction, Size and Shape Computation
- Networking option for creating fragment contours
- Generation of results in form of various Normal Distributions and Rosin-Rammler curve.
- Prediction of the blast design parameters and energy utilization.







# ATM Security System

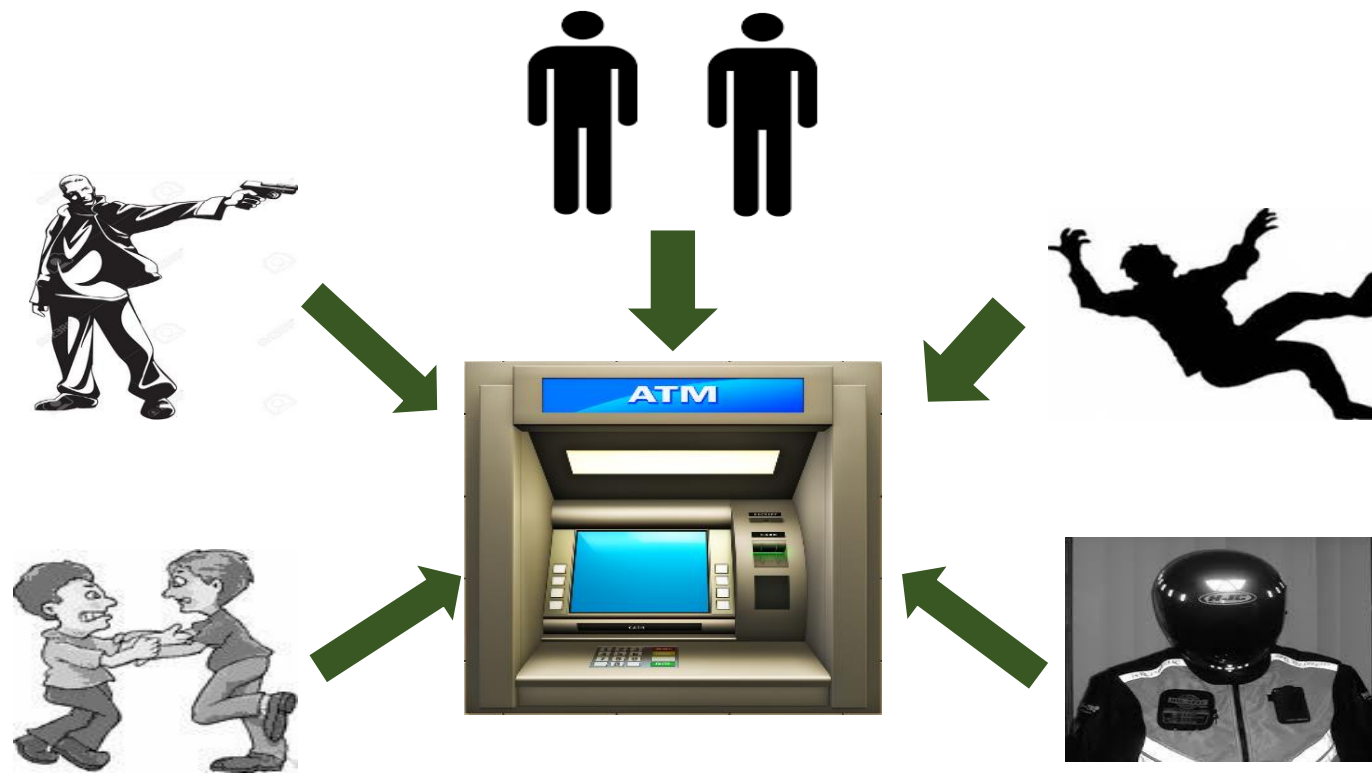


On detection of suspicious event, Security System alerts ATM operator instantly instead of going through the video footage.

## Features:

- Alerts on detection of multiple person, person fall, mask or scuffle.
- Easy to install and configure as per requirement.
- Remote Monitoring Capability
- Cost Effective Solution
- 24x7 Security

YouTube Link – <https://youtu.be/TqX-7ltvkvk>





# Object Tracking System



Camera tracks the target on Detection.

## Features:

- Continuous Surveillance of the area under the scope of Camera
- Full Unmanned Pan and Tilt Control: PELCO-D Protocol
- Control Interface: Ethernet, IR Remote, Optional Joystick.

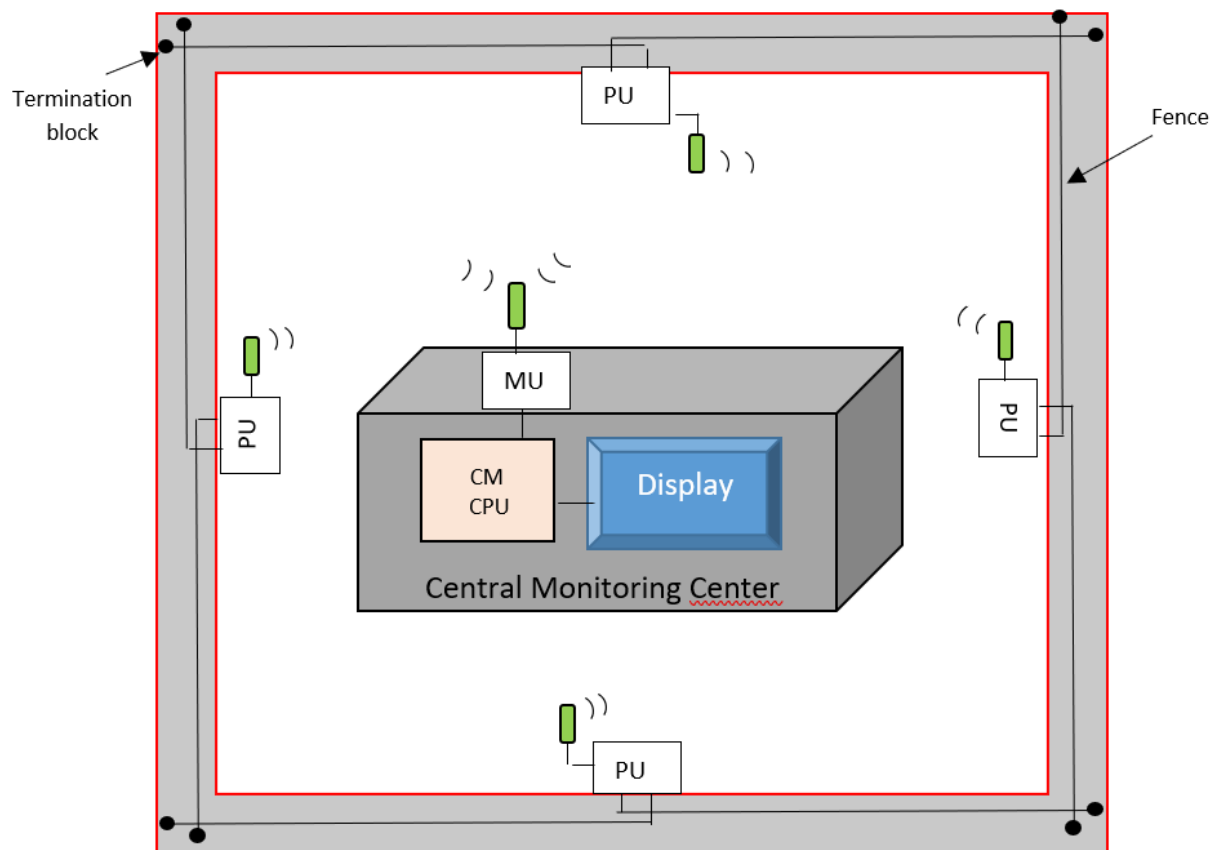


Area under surveillance

YouTube Link – <https://youtu.be/vNVYg7n26p8>



# FenSe



- Outdoor Perimeter Security System
- Sensor cable is interfaced to a standalone Processor Unit (PU) laid near the fence for processing the disturbance signals received from the sensor cable and for generating alerts and sending the alerts wirelessly to the Central Monitor (CM) using Master Unit (MU) for display alerts and necessary action from security personnel



# FenSe



## Central Monitoring Software

The screenshot displays the Central Monitoring Software interface. It features two main panels for Node 1 and Node 2, and an Event Log on the right.

**NODE 1**

BATTERY STATUS	<span style="color: green;">■</span>	HIGH
EVENT	<span style="color: green;">■</span>	NORMAL
ZONE	<span style="color: gray;">■</span> <span style="color: gray;">■</span>	NORMAL

**NODE 2**

BATTERY STATUS	<span style="color: red;">■</span>	bat_label
EVENT	<span style="color: red;">■</span>	evnt_label
ZONE	<span style="color: blue;">■</span> <span style="color: black;">■</span>	zone_label

**EVENT LOG**

```
EVENT: RIGHT EVENT DETECTED
DATE: 2018-02-09
TIME: 02:15:11
EVENT: LEFT EVENT DETECTED
DATE: 2018-02-09
TIME: 02:16:02
EVENT: LEFT EVENT DETECTED
DATE: 2018-02-09
TIME: 02:16:03
EVENT: LEFT EVENT DETECTED
DATE: 2018-02-09
TIME: 02:16:03
```

### Typical Applications:

- Commercial and Industrial areas
- Government agencies and laboratories
- Military bases
- VIP residences
- Airports
- Gated Communities
- Data Centers
- Water, Electrical and Utility substations
- Radio, Cellular, Communication antennas
- Other fenced locations





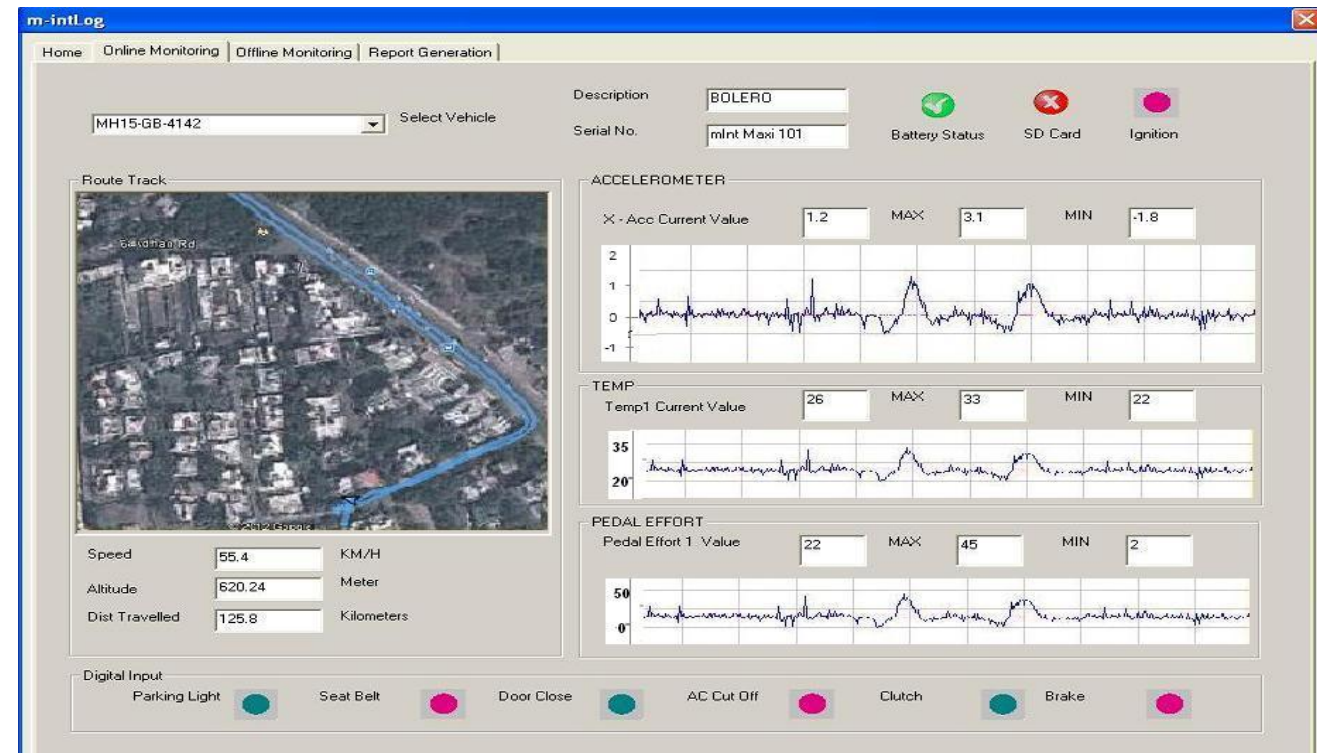
# Automotive Data Logger

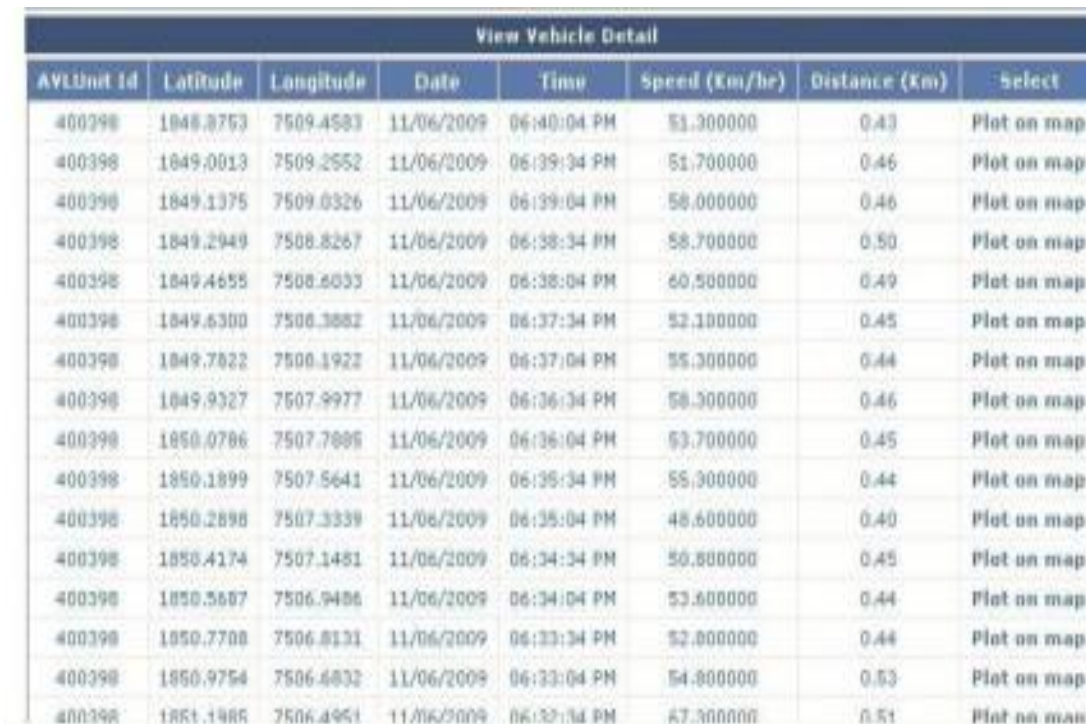


Real time monitoring of different automotive parameters.

## Features:

- Continuous data logging for 50 hrs.
- Data transmission on GPRS and onboard memory with time stamp.
- Data includes Vehicle speed, GPS based distance measurement, Acceleration & Deceleration, Temperature levels, Vibrations, Engine data such as Engine RPM, CAN data etc.
- PC connectivity through RS232 port
- Low power consumption less than 5W and protected for over voltage, current, Spikes, Noise, Reverse polarity connections









# Combi-Lift Parking System



Designing of Control System for Automated multi-level Car Parking.

Features:

- Safety checks for door openings and undefined positions
- Continuous Error Monitoring
- Remote Accessibility





# Software Development



## Testing Tools:

### Software Platforms:

- Visual Studio 2013
- .NET
- Xcode
- Qt

- UTILITY Framework
- PC-LINT
- SQUISH
- SIKULI
- AUTOIT
- WHITE
- SELENIUM

### Language Expertise:

- PYTHON
- C/C++
- C#
- .NET
- VB Script
- QML





# Software Testing

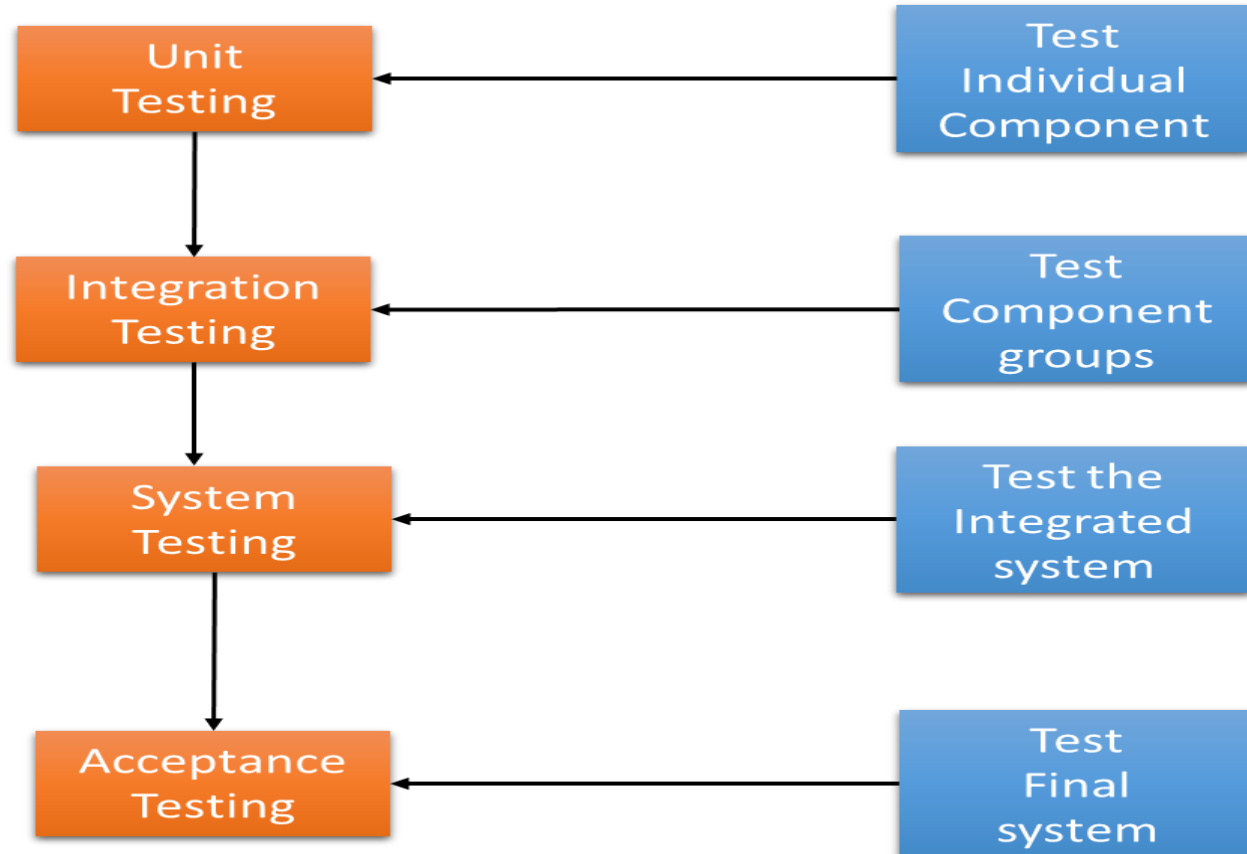


## White Box

- Self testing: Part of coding phase
- Module-wise testing
- Unit test using unit testing tool

## Black Box

- Integration testing
  - Negative testing
  - Boundary testing
  - Positive testing
- System testing





# Contact Details



SCI-COM Software India Pvt. Ltd.

Plot No. 59, Amchi Colony, Survey No. 1, NDA Road,  
Bawdhan, Pune - 411021. Maharashtra, India.

**Phone :** +91-20-22951983, 22951984, 22951985

**Fax :** +91-20-22951904

**Email :** [info@scicomsoftware.com](mailto:info@scicomsoftware.com)

**Website :** [www.scicomsoftware.com](http://www.scicomsoftware.com)